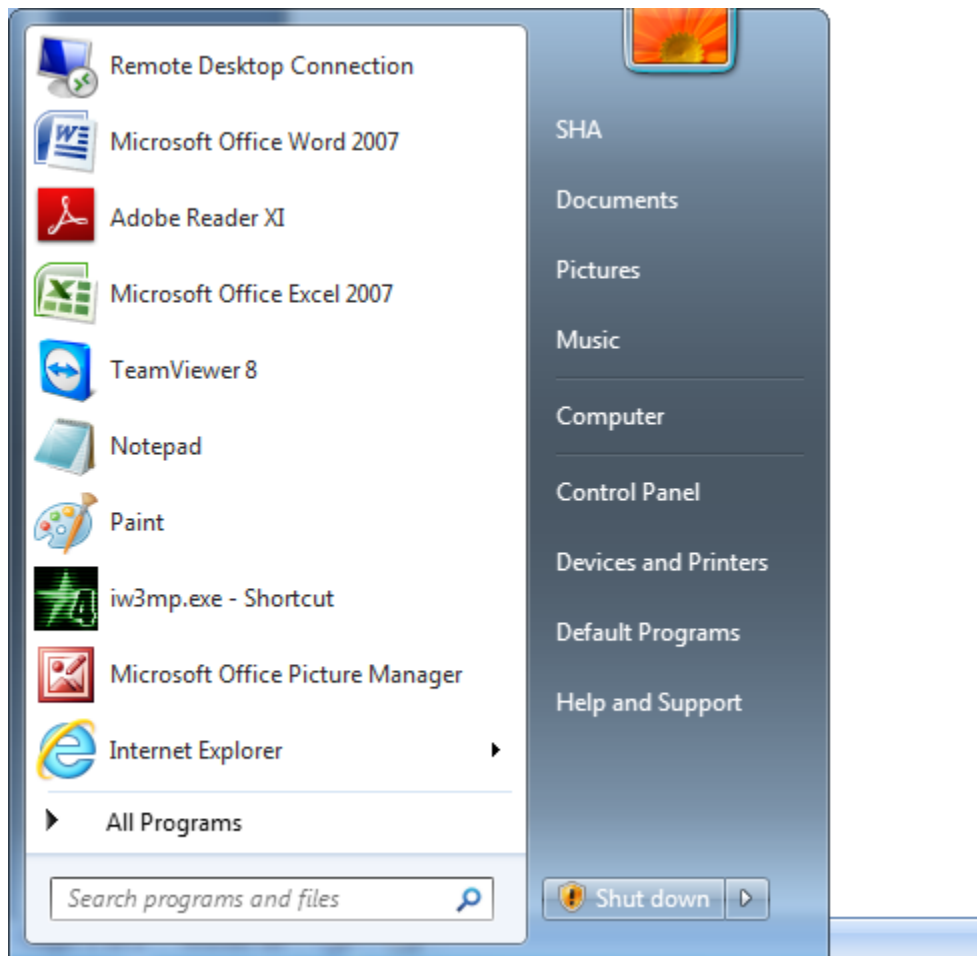


How to Clear the Cache in ASYCUDA WORLD

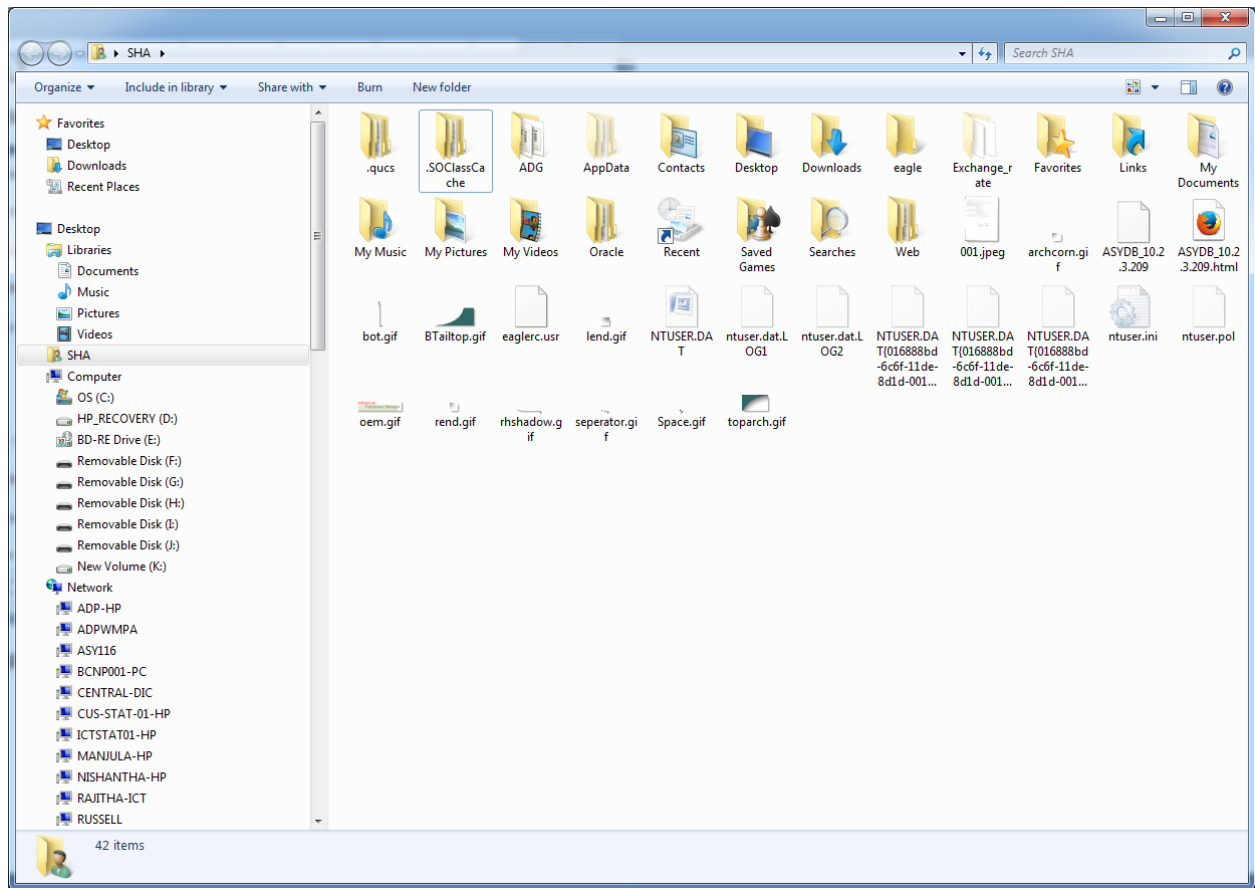
Step1 : Clearing ".SOClassCache" Folder

In Windows 7

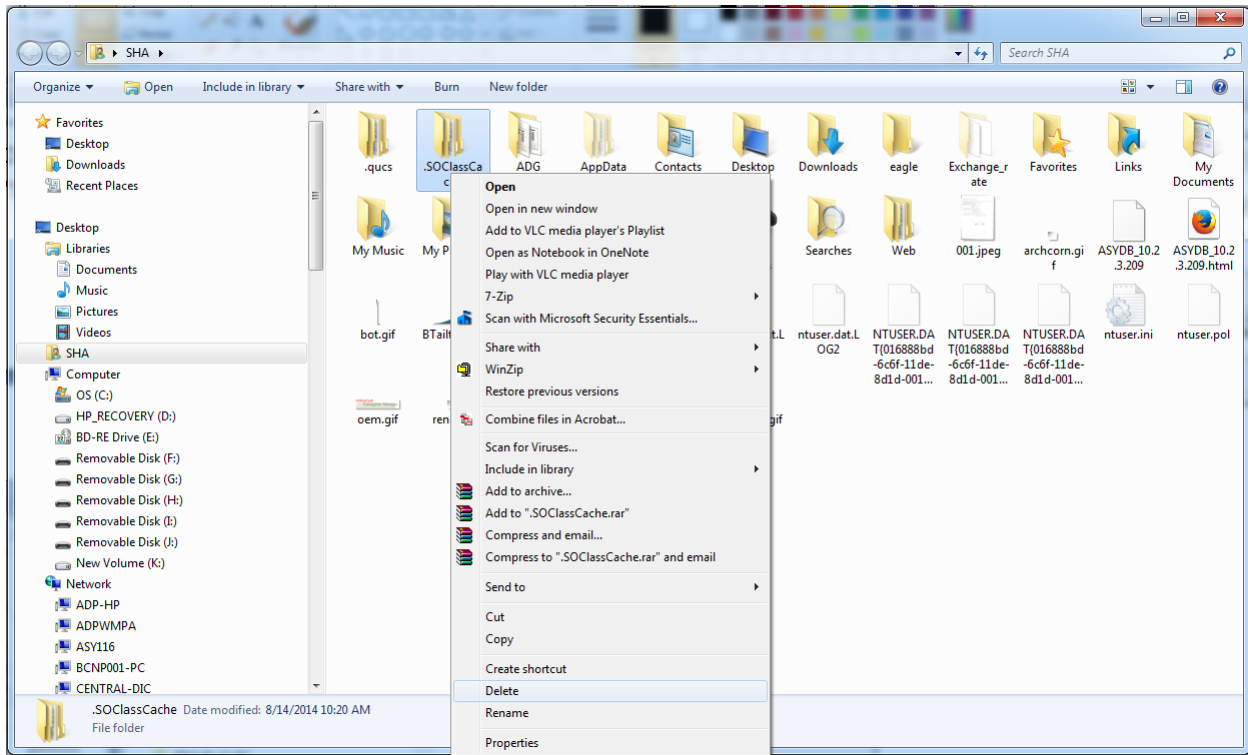
Click the "Start" Button



Click the Top Right Most Username(In this case Username is "SHA")



Right Click the ".SOClassCache" Folder



Click "Delete"

Then Restart the Machine and Log In to the ASYCUDA World Application as Usual.