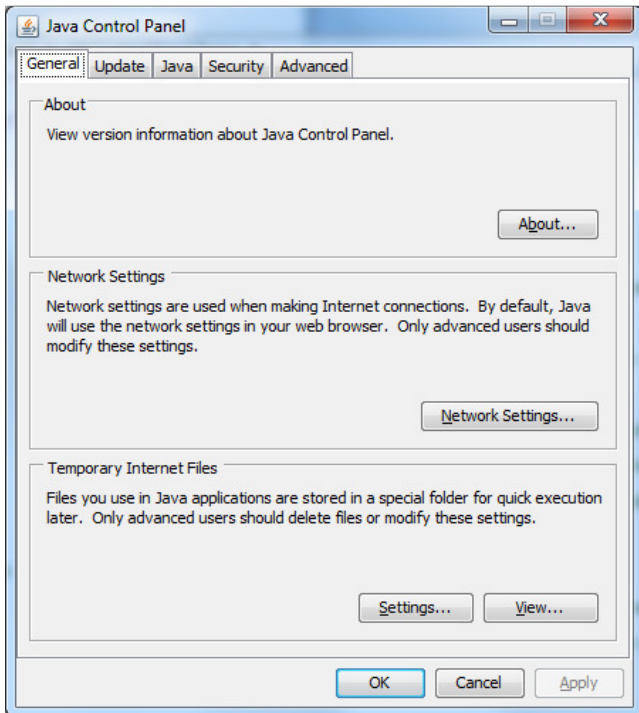
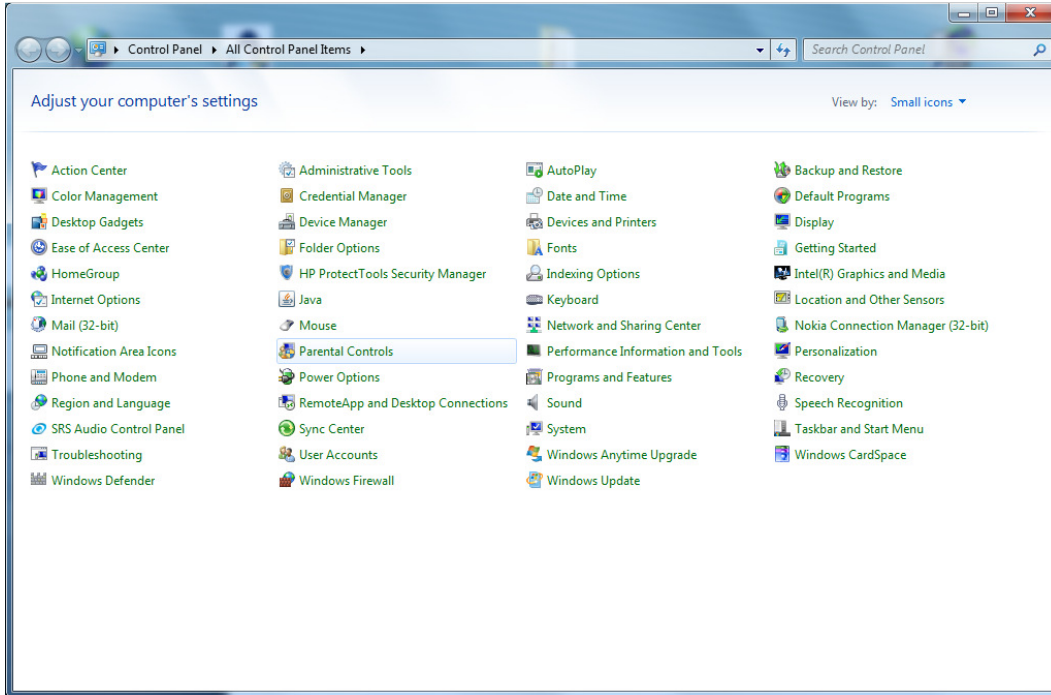
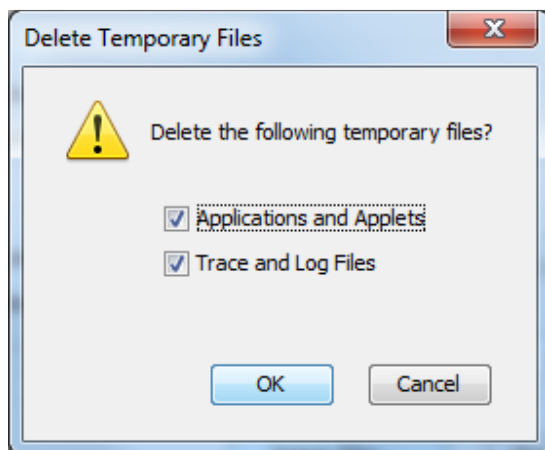
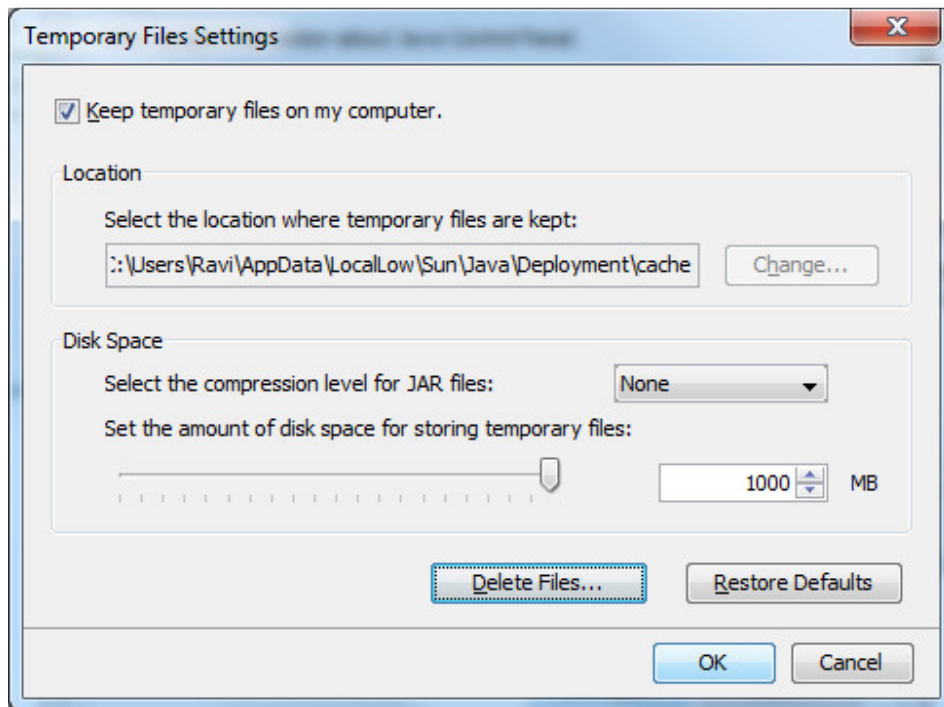


ASYCUDA WORLD CLIENT SIDE CACHE CLEANING PROCEDURE

STEP 1 : DELETE JAVA CACHE





STEP 2 : DELETE .SOCLASSCACHE

WINDOWS7

Delete the .SOClassCache folder in this location.

C:/Users/"login user_name"/.SOClassCache

WINDOWS XP

Delete the .SOClassCache folder in this location.

C:/Documents and Settings/"login user_name"/.SOClassCache

STEP 3 : DELETE BROWSER CACHE.

INTERNET EXPLORER

Goto Tools -> Internet Options -- and delete the browser history.

